



GMT MONTHLY MEMBERSHIP PROGRESS REPORT

Results as of: 2/28/2017

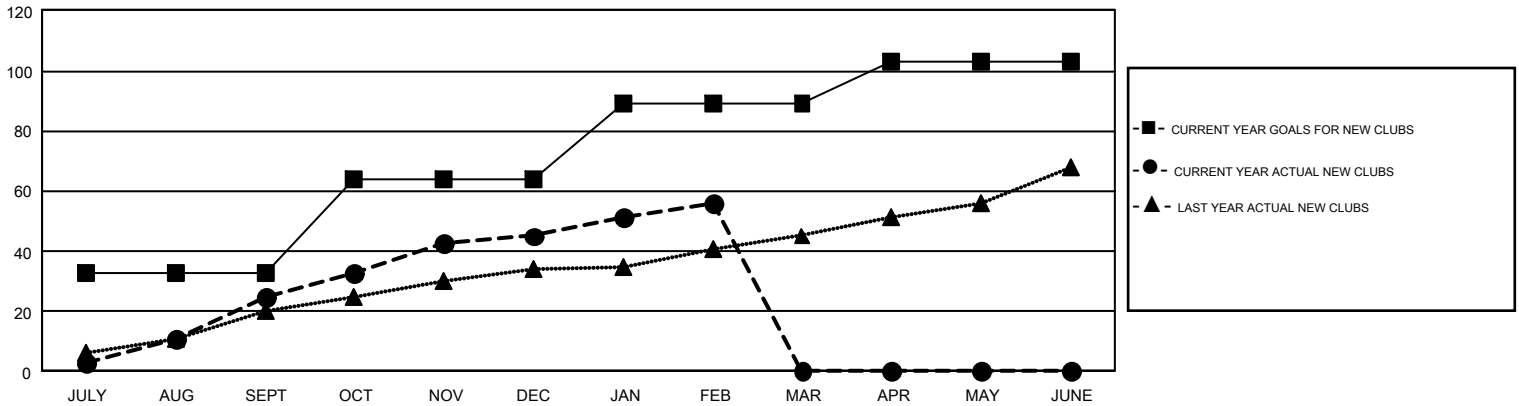
GMT Constitutional Area 6, Group I

GMT: MAHESH PASQUAL

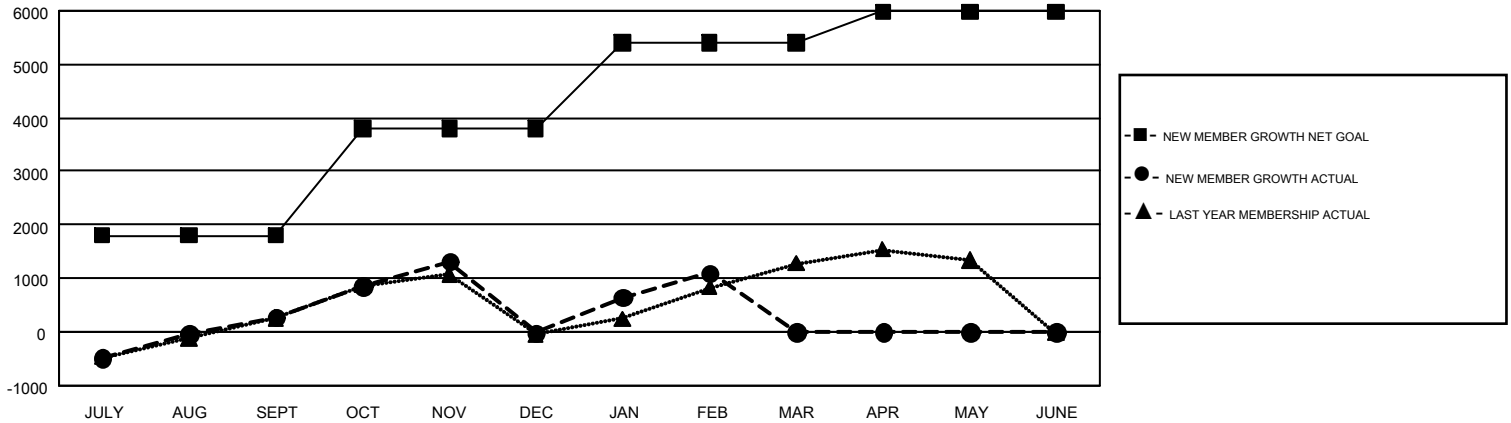
REPORT DOES NOT INCLUDE CLUBS IN UNDISTRICTED AREAS.

Clubs				Members			
RESULTS FOR 2016-2017				RESULTS FOR 2016-2017			
QUARTER	NEW CLUB GOAL	NEW CLUBS	DROPPED CLUBS	QUARTER	NEW MEMBER GROWTH NET GOAL (not reinstated or transfers)	NEW MEMBER GROWTH ACTUAL (not reinstated or transfers)	DROPPED MEMBERS ACTUAL (including transfers)
JULY/AUG/SEPT	33	25	8	JULY/AUG/SEPT	1,796	2,415	2,145
OCT/NOV/DEC	31	20	50	OCT/NOV/DEC	2,004	1,827	2,112
JAN/FEB/MAR	25	11	5	JAN/FEB/MAR	1,609	1,700	583
APR/MAY/JUNE	14	0	0	APR/MAY/JUNE	577	0	0

GOALS AND ACTUAL NEW CLUBS CUMULATIVE



GOALS AND ACTUAL MEMBERS CUMULATIVE



DROPPED CLUBS: 63	944 CLUBS OF 1,593 ADDED 1 OR MORE NEW MEMBERS	GENDER DISTRIBUTION MALE 41,644 (83.77%) FEMALE 8,066 (16.23%)
DROPPED MEMBERS DECEASED 119 CLUB CANCELLED 1,254 OTHER 3,466 <hr/> TOTAL 4,839	CLICK HERE FOR CUMULATIVE MEMBERSHIP DATA	TOTAL FAMILY UNIT MEMBERS 12,530 FAMILY MEMBERS PAYING HALF DUES 6,685